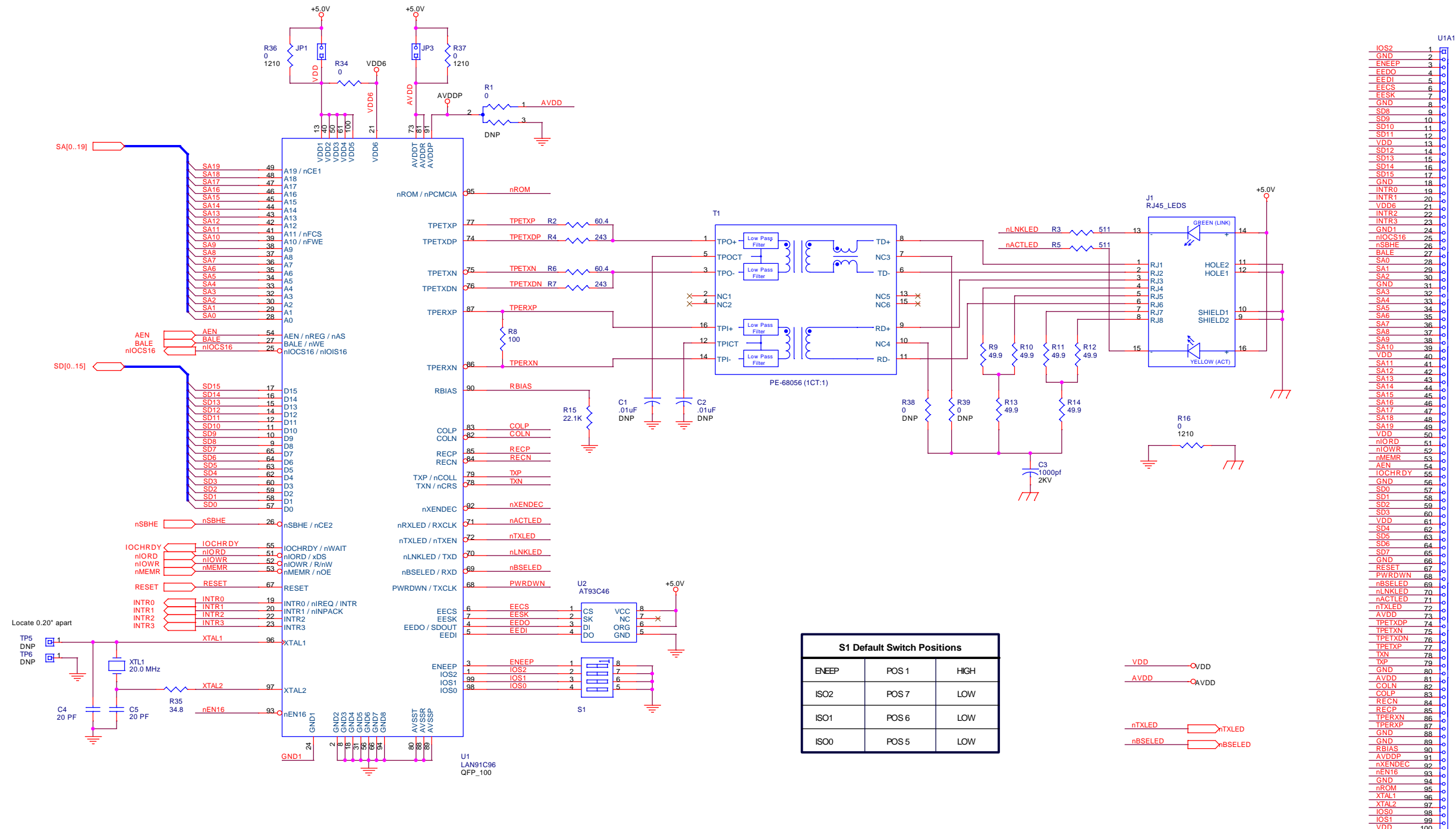


# SMSC LAN91C96 +5V Evaluation Design

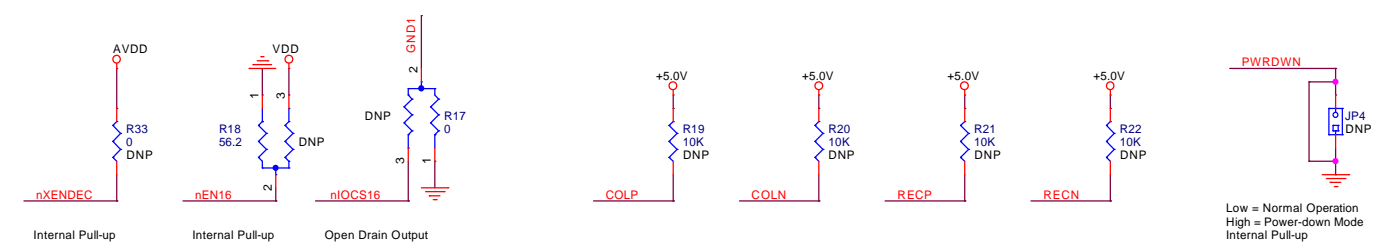
## Assembly No. 6254 Revision B

Rev	ECN Description	Date
A	Release	5-24-02
B	Added Crystal Series Resistor & New Logo in Silkscreen	4-20-04



**S1 Default Switch Positions**

Switch Label	Position	Mode
ENEPP	POS 1	HIGH
ISO2	POS 7	LOW
ISO1	POS 6	LOW
ISO0	POS 5	LOW



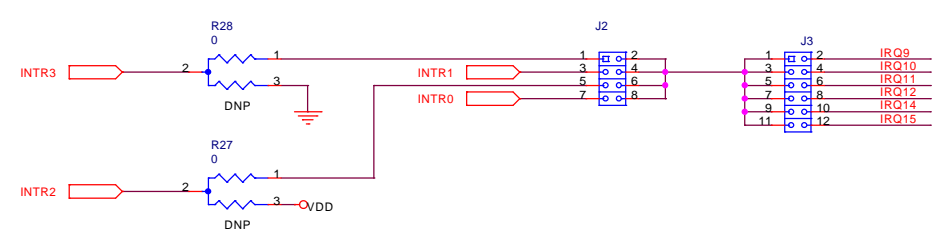
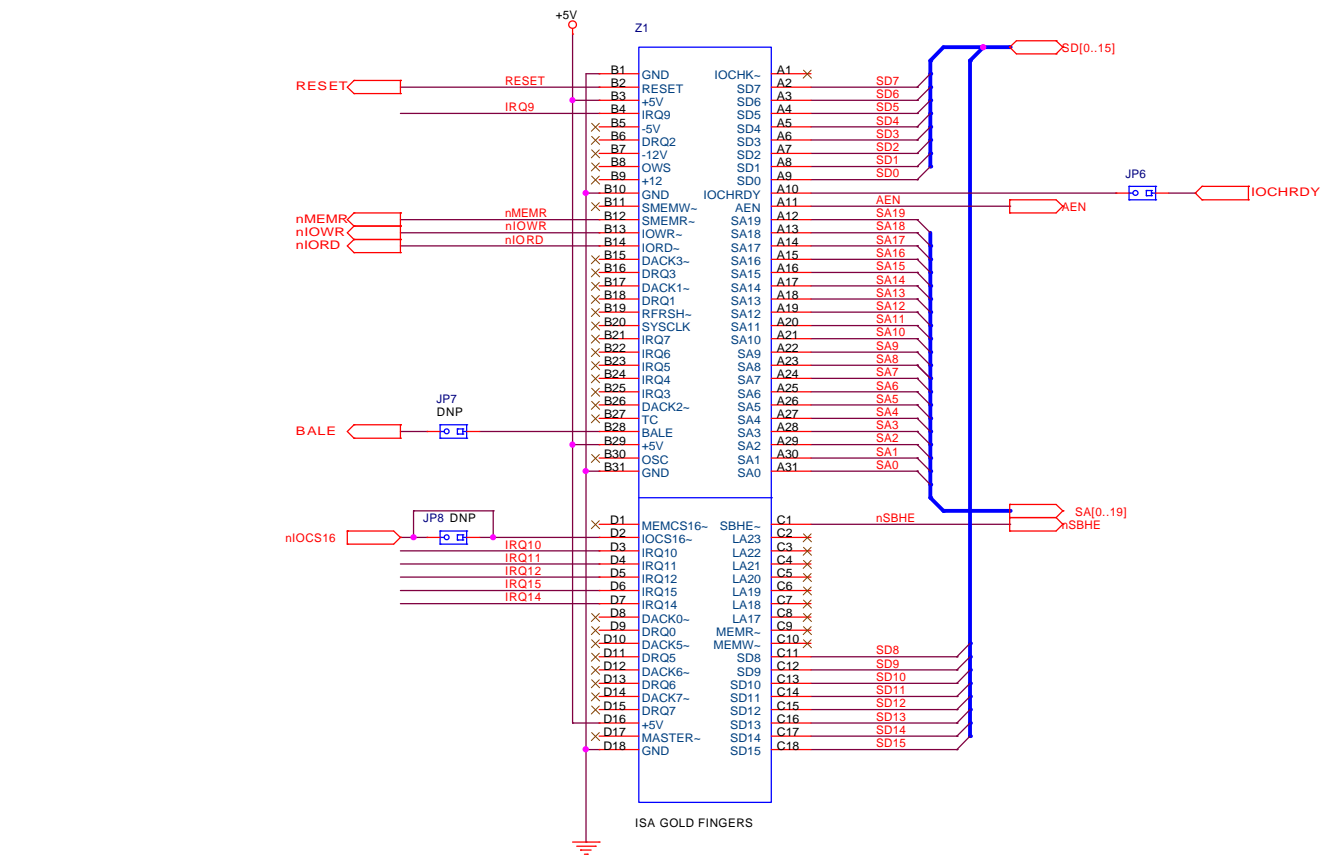
Circuit Diagrams utilizing SMSC Products Are Included As A Means Of Illustrating Typical Semiconductor Applications: Consequently Complete Information Sufficient For Construction Purposes Is Not Necessarily Given. The Information Has Been Carefully Checked And Is Believed To Be Entirely Reliable. However, No Responsibility Is Assumed For Inaccuracies. Furthermore, Such Information Does Not Convey To The Purchaser Of The Semiconductor Devices Described Any License Under The Patent Rights Of SMSC Or Others. SMSC Reserves The Right To Make Changes At Any Time In Order To Improve Design And Supply The Best Product Possible.

LAN91C96 +5V Operation

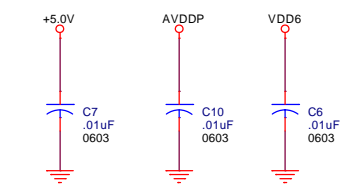
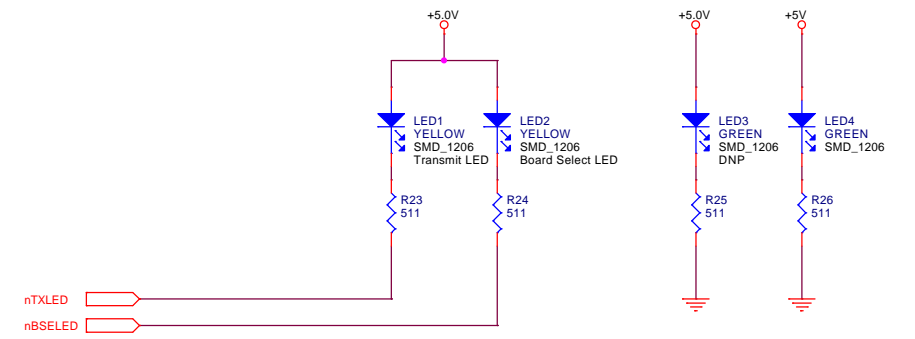
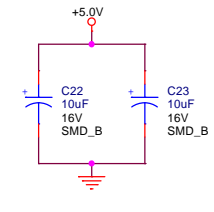
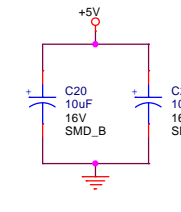
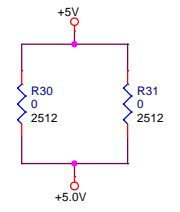
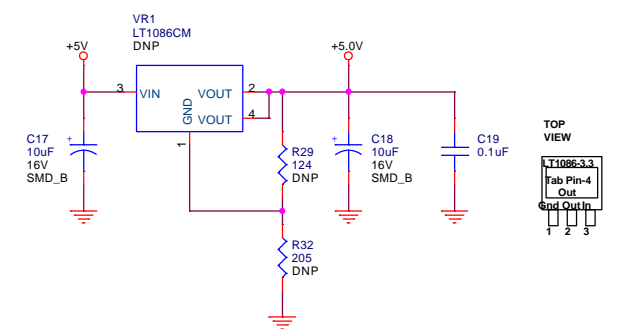
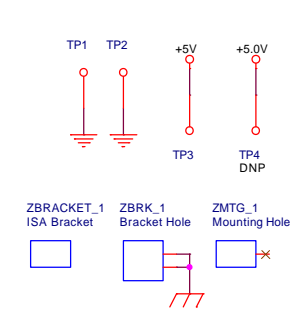
Size C	Engineer	Assembly No. 6254	Rev B
Date: Monday, November 01, 2004		Sheet 1 of 2	

# SMSC LAN91C96 +5V Evaluation Design

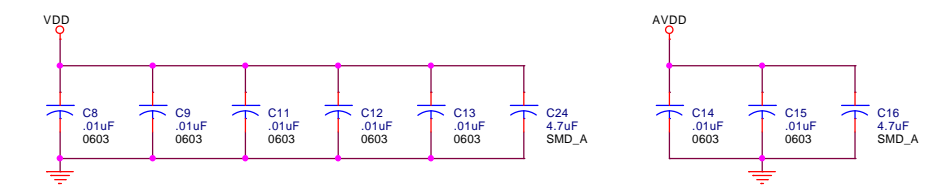
## Assembly No. 6254 Revision B



### +3.3V VOLTAGE REGULATION (Not Required For +5V Design)



### Decoupling Capacitors



### Notes:

1. Daughter Board Footprint to accept both Assy No. 6072 (100-pin TQFP and Assy No. 6087 (100-pin QFP)
2. There are (5) 3-position jumper options on the board. All (5) default to the 1-2 position indicated with the band demarcation.
3. All components, unless otherwise indicated, are SMD\_0805 size.

SMSC SUCCESS BY DESIGN

File: LAN91C96 +5V Operation

Size: C	Engineer:	Assembly No.: 6254	Rev: B
Date: Monday, November 01, 2004		Sheet 2 of 2	